



# Fiji Islands

## Discovery Cruises

Small ship cruising allows you greater access to land and water based activities. Daily shore visits allow interaction with the diverse cultures and beauty of Fiji's more remote islands.



visit us at  
[captaincookcruisesfiji.com](http://captaincookcruisesfiji.com)

# Fiji Islands

Experience the Fiji few travellers get to see on an adventure and discovery small ship cruise. With easy access to Fiji's remote Islands experience the true culture of Fiji and discover its amazing under water world.

Fiji has over 330 Islands waiting to be explored and Reef Endeavour's four adventurous itineraries offer an authentic and personal experience.

Fiji is only a 4 hour flight from Sydney, 3 hours from Auckland, 9 hours from Hong Kong and 11 hours from Los Angeles.



## Cruising with us

We are a Fiji Islands cruise specialist with over 20 years experience in the region. Our intimate knowledge of the area has helped us refine four diverse itineraries to suit all travellers.

We work closely, and maintain strong relationships, with the local people - meaning we are welcomed into schools and villages and get to experience authentic Fiji life.

## All Cruises Include

All Reef Endeavour cruises Include:

- Daily island stopovers & water activities
- All meals - buffet & a la carte
- Guided island, traditional village & school tours
- Snorkelling, Kayaking and Stand Up Paddle boarding
- Tropical island lovo feast & kava ceremony
- Transfers to Nadi hotels after your cruise
- Captain's Kids Club (5-9 yrs)

### Bonus Features

- Weekly cruises to the pristine Yasawa Islands
- Remote Fiji Discovery Cruises each month
- Swimming pool, sauna & 2 sundeck jacuzzis
- Senikai Day Spa - Massage & beauty - optional
- Scuba diving - certified & introductory - optional
- Mini-gym & audio visual room/library
- Full day child minding services - optional
- Easy access small boat launching platform
- Choice of 3 accommodation levels
- Resident Marine Biologist Cultural & Marine presentations.

Fares include all of the above except drinks, optional tours & services. Prices may be subject to change due to fuel price fluctuations.

*"Just fantastic! We cruise with our children and we all have a ball! We are heading back on our 3rd cruise to do the 11 night Lau Group cruise. We did the 7 night discovery cruise last year and the 4 night Yasawa cruise the year before and they all hold different delights! The crew are fabulous and it is all very well planned and organised!"*

Linda, NSW AUS, Feb 2015

# Mamanuca & Yasawa Island Cruises

Join Captain Cook Cruises for voyages of discovery across turquoise waters to unspoilt islands where the cool shade of swaying palms fan over white sand. Meet Fijians in traditional villages, explore their culture & swim in warm crystal clear water over coral reefs teeming with life all from your floating resort, MV Reef Endeavour.

The Yasawa and Mamanuca Islands are famous for their incredible limestone lagoons, dramatic topography, and welcoming people. This is where happiness finds you.



## Mamanuca & Southern Yasawa Islands 3 Night Discovery Cruise

Our 3 night cruise to the Mamanuca and Southern Yasawa Islands visits Monuriki where Castaway was filmed, uninhabited Sacred Islands and the spectacular volcanic island, Waya.

Free pick-up from most Mamanuca island resorts.

3 NIGHT YASAWA ISLANDS CRUISE	
Check in	Saturday 12.00pm weekly – Port Denarau, Nadi
Return	Tuesday 9.00am – Port Denarau, Nadi

## Northern Yasawa Islands 4 Night Discovery Cruise

The 4 Night cruise explores the remote northern Yasawa islands from Naviti to Yasawa including the famous Sawa-i-lau limestone caves and aquamarine lagoon. This cruise visits some incredible snorkel and dive sites including “Smurfs” and “The Maze” at Sawa-i-lau.

4 NIGHT YASAWA ISLANDS CRUISE	
Check in	Tuesday 12.00pm weekly – Port Denarau, Nadi
Return	Saturday 1.00pm – Port Denarau, Nadi

## Mamanuca & Yasawa Islands 7 Night Discovery Cruise

Our most popular cruise explores Fiji's majestic Mamanuca and Yasawa Islands for 7 nights. Situated off the north-west coast of the main island and being volcanic in origin, the Yasawa Islands offer some of the most dramatic scenery in the South Pacific.

Our 7 night cruise combines the 3 & 4 night cruises for the ultimate Mamanuca and Yasawa islands experience. With a new island and coral reef to visit every morning and afternoon this cruise offers exciting beach, water and cultural activities.

7 NIGHT YASAWA ISLANDS CRUISE	
Check in	Tuesdays & Saturdays 12.00pm – Port Denarau, Nadi
Return	Tuesday 9.00am, Saturdays 1.00pm – Port Denarau

### Mamanuca & Yasawa Islands Cruise Highlights

In addition to our standard cruise inclusions (see page 2) your Mamanuca & Yasawa Islands Cruise includes:

- Snorkelling, glass bottom boat & scuba diving opportunities most mornings & afternoons
- Visit an island village & school, meet the locals and visit a handicraft, flower & shell market
- Special village choral church service (Sun)
- Captain's welcome cocktails & dinner
- Island Night, kava, meke & lovo feast.

Optional Adventures:

- Swim in the Sawa-i-lau limestone caves (7 & 4 night cruise)
- 5 Star PADI Scuba Diving.



“... Thoroughly enjoyable in every way, especially the staff. Fantastic, fresh food, great tours to villages & wonderful snorkelling. Just a fun, relaxing, enjoyable holiday. We did not come across one cranky Fijian! They say they are a people who enjoy the day unlike most of us who rush through it. Go and go soon!”  
P&R, WA AUS, Oct 2014

# Remote North and Lau Group Cruises

On the first Tuesday of each month Reef Endeavour departs Port Denarau for 7 to 11 nights on one of 3 amazing voyages of Discovery to places without postcards.

Discover Colonial Fiji visiting the old capital, pearl farming town and 180th meridian or take a voyage circumnavigating Vanua levu and experiencing the 4 very different cultures of Fiji or visit remote Lau where people of Tongan Heritage only see a supply boat once every 6 weeks.



Levuka



Tavoro Falls

## Colonial Fiji Discovery Cruise – 7 Nights (Fiji’s remote north)

Discover remote Northern Fiji and explore the coast of Viti Levu, Fiji’s main island. Visit the old capital of Fiji, the world heritage listed town of Levuka, on the island of Ovalau. Meet the people of this quiet historic town with its stately backdrop of 19th Century colonial architecture is a time capsule of colonial rule.

Swim at Tavoro Falls in the Bouma Heritage park on the garden island of Taveuni and stand on the 180th meridian, the natural dateline. Be welcomed in to a local village where you will enjoy a lovo feast & meke.

Our journey takes you to Savusavu’s extinct volcanic crater, hot springs, natural pearl farm and thriving markets. We explore remote coral cays, accessible only by ship such as Nananu-i-ra & Manava Cay for extraordinary snorkelling, glass bottom boat and scuba diving.

### Optional Adventures

- Scuba Dive remote reefs including the Rainbow Reef
- Levuka; your choice of 3 historic town tours
- Savusavu; pearl farm tour, river tubing, mountain biking.

#### 7 NIGHT COLONIAL FIJI CRUISE

Check in	Tuesday 12.00pm – Port Denarau, Nadi
	2015 - 7 Apr, 2 Jun, 6 Oct, 1 Dec
	2016 - 5 Apr, 7 Jun, 2 Aug, 4 Oct, 6 Dec
Return	Tuesday 9.00am – Port Denarau, Nadi

## 4 Cultures Discovery Cruise – 7 Nights (Fiji’s remote north)

Circumnavigate Vanua Levu – Fiji’s second largest island – and explore the islands, rivers and rainforests of the remote north. On the way meet the local people of the four different cultures of Fiji, the Elice (Polynesian), Banaban (Micronesian), Indian and the Fijian (Melanesian) people. Snorkle and dive the Great Sea Reef - the world’s third largest barrier reef.

Travel by local bus to Labasa, Vanua Levu’s largest town. This remote northern trading town’s market will amaze you with a myriad of natural produce.

Be welcomed into a local village by the Chief, enjoy a lovo feast and meke (Fijian Dance). This concludes an amazing journey to Fiji’s remote north.

### Optional Adventures

- Labasa; Explore the hinterland by local bus or river tubing
- Scuba dive the Great Sea Reef and other remote Vanua Levu reefs.

#### 7 NIGHT 4 CULTURES CRUISE

Check in	Tuesday 12.00pm – Port Denarau, Nadi
	2015 - 7 Jul, 1 Sep
	2016 - 5 Jan, 3 May, 5 Jul, 6 Sep
Return	Tuesday 9.00am – Port Denarau, Nadi



*“Fantastic itinerary! Saw the real Fiji, not a resort like most tourists. All of the crew are wonderful. I think of them as friends that I have shared an adventure with.”*  
Greg, USA, Mar 2015

5. Find out more, visit [captaincookcruisesfiji.com](http://captaincookcruisesfiji.com)



Micronesian dancer of Rabi

# The Lau & Kadavu Discovery Cruise - 11 Nights

Embark on a voyage of discovery to a part of Fiji rarely seen by tourists - the Lau Islands and Kadavu.

Departing from Port Denarau, Nadi the first stop is Makogai Island which was a leper colony and is now a center for giant clam and turtle cultivation. Next is Lavena on the southern coast of Taveuni where waterfalls empty directly into the sea and you can hike for a freshwater swim. We cruise on to the most northern island of Lau - Wailigilala where we will explore the island, the ruin of an old light house, nesting turtles, snorkel untouched reefs.

From here we cruise to the nearby Qilaqila, known for its pristine waters and mushroom shaped islands. Explore some amazing caves and incredible reefs in aqua lagoons.

Continuing on we pass Lakeba & Moce to Oneata where the village invite us to their Church on the hill. Fulaga is our next stop. This amazing lagoon is too narrow for us to navigate so we launch the small boats off shore and explore its crystal lagoon and amazing corals. We then visit uninhabited Vuaqava and its central lake where you can explore and view turtles, snakes & amazing bird life.

Be welcomed by the villagers on the island of Kabara known for their wood turning and Tongan heritage. Experience a traditional Meke, Sevusevu & Ivo quite different from the traditional Fijian.

We head on to horse-shoe shaped Totoya island to visit a local school and meet the children. Next stop is Kadavu, famous for its traditional Turtle callers, wildlife and underwater world.

Most days offer the opportunity to snorkel, swim and Scuba Dive the pristine waters of the beautiful Lau group.

## Included Cruise Highlights

In addition to our standard cruise inclusions (see page 2.) Your Lau Discovery Cruise includes:

- Cultural, Navigation and Marine talks
- Experience remote islands with Tongan heritage and culture
- Amazing aqua lagoons and Mushroom shaped islands
- Turtle calling at Kadavu
- Exploration of islands not seen by tourists.



## Optional Adventures

- Scuba Diving some of Fiji's most remote reefs
- Local Fishing trip in Kadavu
- Traditional canoe at Vuaqava on the inland lake
- Mini-bus to the Waterfall at Kadavu.

11 NIGHT LAU & KADAVU DISCOVERY CRUISE	
Check in	Tuesday 12.00pm – Port Denarau, Nadi 2015 - 4 Aug, 3 Nov 2016 - 1 Mar, 1 Nov 2017 - 3 Jan
Return	Saturdays 9.00am – Port Denarau, Nadi



*We were very privileged to visit places, so remote, untouched and not on the tourist route. It was humbling to be able to walk for a short while in the villagers world & to experience Fijian village life. We were amazed at their generosity & eagerness to make us feel welcome.*

*Richard & Heather, NSW AUS, Oct 2013*

7. Find out more, visit [captaincookcruisesfiji.com](http://captaincookcruisesfiji.com)

# MV Reef Endeavour



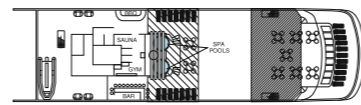
The MV Reef Endeavour is an intimate small ship. She caters to 140 passengers, ensuring every guest receives personal attention in an informal, social atmosphere.

Small ship cruising allows passengers greater shore access. We visit new and exciting destinations daily. Our easy access hydraulic platform, makes it quick and easy to board and disembark for passengers of all ages.

## Facilities

Swimming pool, spa, sun deck, jacuzzis and mini gym; glass bottomed-boat, snorkelling and dive vessels; two bars, two lounges and a single-sitting dining saloon; day spa, gift shop, chart house, library, free Wi-Fi (when in range) guest laundry and 24 hour coffee and tea facilities.

## MV Reef Endeavour Deckplans



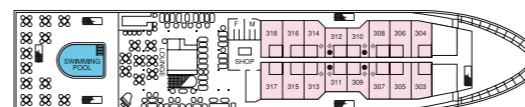
Sun Deck



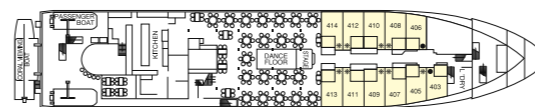
A Deck - Top Deck



B Deck



C Deck

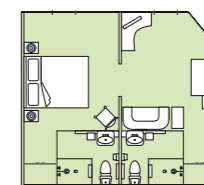


D Deck

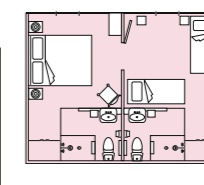
## Legend

All rooms have twin beds convertible to double bed unless indicated as follows:

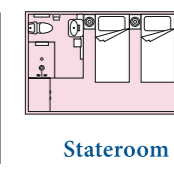
- Double bed
- ◆ Connecting Family Staterooms
- ◆ Twin beds
- \* Family Cabins – twin single beds plus two upper Pullman berths



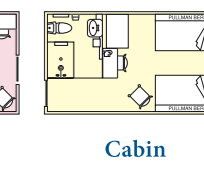
Tabua Suite



Family Stateroom



Stateroom



Cabin



Tabua Suite



Tabua Suite (Lounge)



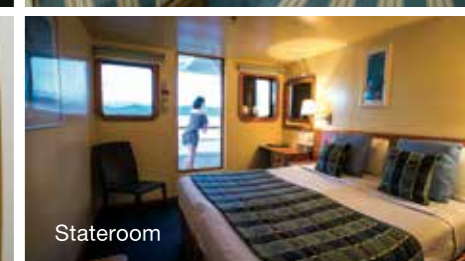
Connecting Family Stateroom



Connecting Family Stateroom



Cabin - Family 4 Berth



Stateroom

## Technical details

Registry: Fiji Islands  
Tonnage: 3,125 tonnes  
Length: 73 metres  
Beam: 14 metres  
Draft: 3.6 metres  
Speed: 13.5 knots



# Weddings, Romance & Events

## Wedding Group Bonus

Travel in a group of **15 or more** paying passengers and receive your Wedding Package **HALF PRICE**.

**30 guests or more** and the Bride also cruises **FREE**.



## Weddings

Whether your ideal wedding day is for two on a remote beach or on your own private island of Tivua, with 200 of your closest friends, Captain Cook Cruises will make your day just as you want it to be. Discover why Fijians are the world's best hosts and enjoy the romance of these beautiful islands for your dream wedding.

Our wedding and vow renewal packages can be tailored to your needs. All of our weddings include;

- A dedicated wedding planner to make your day perfect.
- Marriage Ceremony performed by a celebrant on your cruise, either on board Reef Endeavour, Fiji One or Ra Marama or on the tropical beach setting of Tivua with Fijian singer and guitarist accompaniment
- Bride's teardrop/trailing orchid bouquet, Groom's buttonhole flower, box of petals, bottle of sparkling wine & wedding cake
- Marriage certificate
- Ask about our Photography & hair & make-up packages.

## Romance & Spa

There are Senikai Spas for beauty and massage on Tivua Island and aboard Reef Endeavour. Why not pre-book some romance from \$89 (AUD). Spa packages include:

- 15 minute Senikai massage each
- His and hers Senikai Essence of Viti gift pack
- Bottle of sparkling wine on arrival
- Breakfast in bed one morning.

## Functions & Events

We offer a comprehensive range of private event venues for 2 to 500 guests. Our fleet of 5 ships and an island, only an hour sail from Denarau, cater to every function imaginable.

- Cocktails & Dining
- Island transfers and full day Sailing events
- Team Building, Theme Events & Culture
- 3, 4 or 7 night events for up to 130 passengers
- Birthdays, Anniversaries or any family celebrations.

## Padi Scuba Diving

Reef Endeavour and Tivua Island day cruises offer dive opportunities with Viti Water Sports for certified, occasional and first time divers.

We are a 5 Star PADI dive facility offering up to 3 dives daily.

- For first time divers, a gentle entrance from the shores of a tropical island will see you exploring the spectacular fringing coral reefs
- Swim throughs, caves, coral bommies and breathtaking coral gardens are some of the highlights you may experience
- Dive sites will vary depending on the cruise and conditions and most are accessed by small boat.

# Day Cruises & Tivua Island Stay



Tall ship Ra Marama anchored off Tivua Island

## Tivua Island Day Cruise

Set sail for a day's island adventure aboard tall ship Ra Marama or sailing catamaran Fiji One. Your one day cruise includes all activities; guided snorkelling of clam gardens & coral plantation, glass-bottomed boat tour, use of kayaks & volleyball:

- Kava ceremony, music and entertainment
- Morning and afternoon tea
- Tropical buffet lunch
- Beer, wine and soft drink whilst on the island
- Return Denarau, Nadi and Coral Coast Transfers
- Captain's Kids Club (CKC)
- Optional Diving and spa treatments.

Departs daily from Port Denarau 10.00am - returns 5.00pm.

## Sunset Dinner Cruise

Cruise into a Pacific Island sunset with a complimentary welcome drink and a great BBQ Dinner. Fijian cultural entertainment and spectacular scenery round-off a perfect evening on the water. Complimentary transfers from Nadi & Denarau hotels.

Departs Port Denarau 5.30pm - Return Port Denarau 8.30pm. (5.00pm return 8.00pm - Jun/July/Aug)



## Private Island Stay - Tivua

Imagine a night on your own private tropical island without the million dollar price tag. Tivua Island is a romantic hideaway offering seven million star dining on the beach and lantern-lit walks that make the world seem very distant.

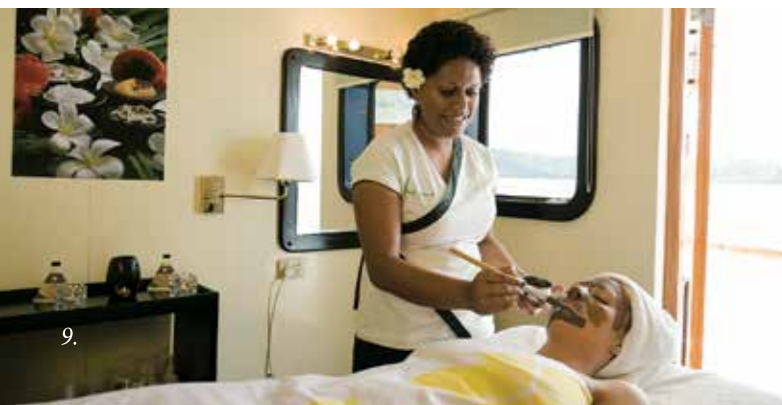
Arrive by tall ship with the island's day visitors and enjoy all the scheduled activities including guided snorkelling and glass bottom boat tours, volleyball, cultural ceremonies and buffet lunch.

In the afternoon bid farewell to the other guests and discover the romance of your own private island. From sunset to late the next morning the island offers accommodation for just two couples.

Includes all meals and activities on the island, return cruise to Tivua Island by tall ship and Nadi hotel transfers.



Fiji One





**Captain Cook  
Cruises™**  
FIJI'S CRUISE LINE



Your Travel Agent

## Reservations

**Captain Cook Cruises Fiji**  
Captain Cook Cruises Building  
Port Denarau Marina  
PO Box 23, Nadi Town, Fiji Islands  
Tel: +679-670 1823  
Fax: +679-670 2045  
Email: nadi@captaincook.com.fj

**Reservations Australia**  
Tel: +61 2 9126 8160  
Toll free: 1300 86 3454  
Fax: +61 2 9904 0055  
Email: fiji@captaincook.com.fj

**New Zealand – Travel Agents only**  
Tel: +64 2 163 1474  
Email: nz@captaincook.com.fj

**United Kingdom**  
Tel: +(44) 1787 211 668  
Email: uk@captaincook.com.fj

Tusna Pty. Ltd. trading as:  
Captain Cook Cruises Fiji  
PO box 349, Milsons Point  
NSW 1565 Australia  
ABN 63 001 364 487

 [facebook.com/CCCFiji](https://facebook.com/CCCFiji)

 [captaincookfiji](https://instagram.com/captaincookfiji)

 [twitter.com/cccfiji](https://twitter.com/cccfiji)